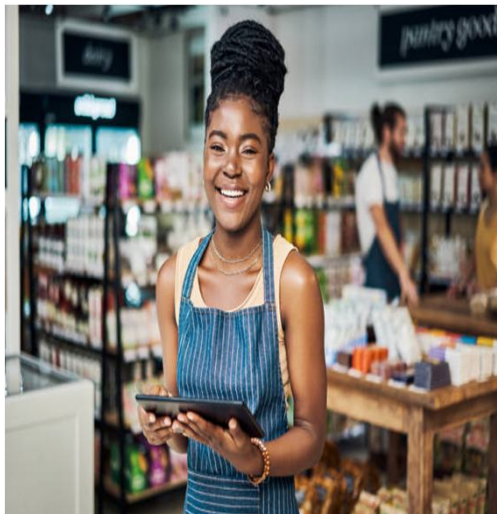




PRODUCT CATALOGUE



**PAN
AFRICA**



**DR CONGO UGANDA
MADAGASCAR
GHANA SOMALILAND
NIGERIA
BENIN TANZANIA ZAMBIA
TOGO EITHOPIA**

**IS-01
HOUSEHOLD ITEMS**



**Item No. 3989; 8pc/ctn;
15kg; 0.51cbm**



**Item No. 13; 24pc/ctn;
15kg; 21cbm**



**Item No. 528; 12pc/ctn;
16kg; 0.85cbm**



**Item No 102; 24pc/ctn;
15kg; 0.668cbm**



**Item No. 3868; 8pc/ctn;
13.5kg; 1.4cbm**



**Item No. 151; 24pc/ctn;
15kg; 0.48cbm**



**Item No. JL5540-4;
72pc/ctn; 15kg; 0.6cbm**



**Item No. YF203; 6pc/ctn;
8.1kg; 0.68cbm**

**IS-02
FLASH LIGHT**



**Item No. 929AT;
80pc/ctn; 20kg;
0.35cbm**



**Item No. 925B;
60pc/ctn; 24.5kg;
0.5cbm**



**Item No. 918;
400pc/ctn; 17kg;
0.18cbm**



**Item No 1228; 480pc/ctn;
19kg; 0.24cbm**



**LED Bulbs
Item No. 40W;
60pc/ctn; 15kg;
0.22cbm**



**LED Bulbs
Item No. 40W;
60pc/ctn; 10.8kg;
0.15cbm**



**SOLAR/LIGHT KIT
Item No. 2008;
16pc/ctn; 32kg; 0.1cbm**

**IS-03
BLUETOOTH SPEAKER**



**Item No. GTS-1363;
80pc/ctn; 25kgs,
0.11cbm**



**Item No. GTS-1346;
80pc/ctn; 24kgs,
0.11cbm**



**Item No. GTWS-1349;
80pc/ctn; 25kgs,
0.137cbm**



**Item No. 887;
100pc/ctn; 21kgs,
0.053cbm**



**Item No. ZQS4275;
24pc/ctn; 26kgs,
0.216cbm**



**Item No. GTS-1701;
06pc/ctn; 19kgs,
0.184cbm**



**Item No. 125mini;
100pc/ctn; 27kgs,
0.100cbm**

**IS-04
DISPOSABLE RAZOR'S/BLADE**



Item No. AA81 Blue;
100pc/ctn; 21kgs; 0.100cbm



BLADE; Item No. AA81 Green;
100pc/ctn; 24kgs; 0.100cbm



Item No. 708; 320pc/ctn;
26kgs; 0.100cbm



Item No. A002; 1728/ctn;
25kgs; 0.100cbm

**IS-05
ADHESIVES**

WHITE GLUE



**Item No. 5kg; 04pc/ctn;
230kgs; 0.300cbm**



**Item No. 1kg ; 24pc/ctn;
500kgs; 0.800cbm**



**SILICON GP; 280ml GP;
24pc/ctn; 75kgs; 0.150cbm**



**INSTANT GLUE;
100pc/ctn; 30kgs; 0.168cbm**



**Item No. 250g;
36pc/ctn; 50kgs;
0.085cbm**



**Item No. 500g;
36pc/ctn; 200kgs;
0.300cbm**

**IS-06
ADHESIVE TAPE**



CLEAR



**Item No. 4550;
72pc/ctn; 390kgs;
1.5cbm**

BROWN



**Item No. 4550;
72pc/ctn; 240kgs;
0.9cbm**

ELECTRICAL



**Item No. viin-10;
50pc/ctn; 130kgs;
0.35cbm**



**Item No. viin-10;
50pc/ctn; 80kgs;
0.18cbm**



**Item No. OSOKR ;
50pc/ctn; 80kgs;
0.18cbm**



**Item No. OSOKR ;
50pc/ctn; 80kgs;
0.18cbm**

**IS-07
BODY CARE**

BODY WASH



**Item No. 2365; 18pc/ctn;
65kgs; 0.12cbm**

BODY WASH



**Item No. 26567; 15pc/ctn;
86kgs; 0.15cbm**

SCRUB



**Item No. 2306 ; 96pc/ctn;
68kgs; 0.21cbm**

SCRUB



**Item No. 1117; 72pc/ctn;
93kgs; 0.13cbm**

HAND CREAM



**Item No. 85001;
144pc/ctn; 27kgs; 0.07cbm**

FOOT CREAM



**Item No. 85002 ;
144pc/ctn; 27kgs; 0.07cbm**

FOOT CREAM



**Item No. 85002; 144pc/ctn;
22kgs; 0.06cbm**

**IS-08
ORAL HYGIENE**



TOOTHBRUSH



**Item No. 9702; 1200pc/ctn;
20kgs; 0.085cbm**



**Item No. 231; 1200pc/ctn;
20kgs; 0.09cbm**



**Item No. 1332; 1200pc/ctn;
20kgs; 0.085cbm**

TOOTH PASTE



**Item No. 78257;
576pc/ctn; 17kgs;
0.085cbm**



**Item No. 39052;
72pc/ctn; 25kgs;
0.027cbm**



**Item No. GD018;
72pc/ctn; 25kgs;
0.027cbm**



**Item No. 39052;
72pc/ctn; 25kgs;
0.027cbm**

IS-09 LOCKS



Item No. 38/50/63; 220/120/72pcs/ctn;
53/52.8/54kgs; 0.07/0.05/0.04cbm



Item No. BW-501; 72pc/ctn;
41.2kgs; 0.05cbm



Item No. BSL701-3-48;
48pc/ctn; 54kgs; 0.05cbm



Item No. SLY770/790;
72pc/ctn; 30/47kgs;
0.06cbm



Item No. 40long; 240pc/ctn;
44kgs; 0.06cbm



Item No. 50long; 120pc/ctn;
55.4kgs; 0.07cbm

IS-10 ELECTRICAL APPLIANCES

MIXER



Item No. ST-999; 10pc/ctn;
190kgs; 1.2cbm

MIXER



Item No. ST-1731; 10pc/ctn;
100kgs; 0.6cbm

MIXER



Item No. ST-1688; 06pc/ctn;
73kgs; 0.48cbm

ELECTRIC KETTLE



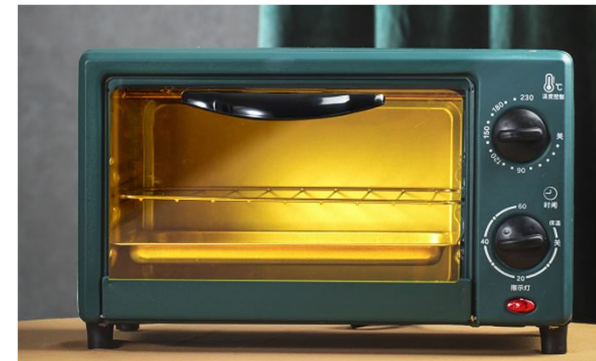
Item No. SC-20A;
16pc/ctn; 430kgs; 4.2cbm

ELECTRIC KETTLE



Item No. ST-2023;
16pc/ctn; 244kgs; 2.4cbm

OVEN



Item No. ST-9812; 6pc/ctn;
106kgs; 1.0cbm

**IS-13
DAILY NECESSITIES**

BROOM



**Item No. 9222; 100pc/ctn;
80kgs; 0.45cbm**

WIPER



**Item No. 097; 100pc/ctn;
80kgs; 0.26cbm**

BRUSH



**Item No. Glue brush; 360pc/ctn;
45kgs; 0.2cbm**

BRUSH



**Item No. 587; 280pc/ctn;
30kgs; 0.16cbm**

CLOTHS PIN



**Item No. 16; 144pc/ctn;
40kgs; 0.3cbm**

WIRE BALL



**Item No. 512; 300pc/ctn;
38kgs; 0.3cbm**

**IS-13
DAILY NECESSITIES**

PLASTIC SCRUBBER



**Item No. 606; 200pc/ctn;
35kgs; 0.3cbm**



**Item No. 3pc; 200pc/ctn;
20kgs; 0.32cbm**

ROPE



**Item No. 10m; 600pc/ctn;
50kgs; 0.12 cbm**

ROPE



**Item No. 15m; 240pc/ctn;
46kgs; 0.07 cbm**

LOOFA



**Item No. 20k; 600pc/ctn;
37kgs; 0.15cbm**

CLEANING CLOTH



**Item No. 5pcs; 360pc/ctn;
40kgs; 0.15cbm**

**IS-15
GLASSWARE**

GLASS JAR



**Item No. 380/500/750 Glass Jar;
72/60/48pc/ctn; 70kgs;
0.25/0.28/0.32cbm**

WATER GLASS



**Item No. 108-6; Glass
12pc/ctn;
100kgs; 0.2cbm**

WATER GLASS



**Item No. 109-6; Glass
12pc/ctn;
180kgs; 0.5cbm**

WATER GLASS



**Item No. 10;
80pc/ctn;
180kgs; 0.5cbm**

JUG SET



**Item No. LW-5; 20pc/ctn;
250kgs; 0.9cbm**

WATER GLASS



**Item No. 108L; 12pc/ctn;
100kgs; 0.2cbm**

TEA MUG



**Item No. K0081-C; 108pc/ctn;
80kgs; 0.18cbm**

TEA MUG



**Item No. ZB24; 72pc/ctn;
80kgs; 0.25cbm**

IS-17
LAUNDRY DETERGENT



Laundry Detergent; 10pc/ctn;
2300kgs; 0.044cbm

**IS-18
LPG GAS HOSE**



**LPG GAS HOSE;
10bag/ctn;
340kgs; 0.8cbm**

**IS-19
COOKWARE**



**Item No. 673D; 06pc/ctn;
37kgs; 0.11cbm**



**Item No. 673D; 06pc/ctn;
37kgs; 0.11cbm**



**Item No. 111D; 12pc/ctn;
35kgs; 0.09cbm**



**Item No. 111D; 12pc/ctn;
35kgs; 0.09cbm**

**IS-20
COOKWARE**



**Item No. 058 16-24; 04pc/ctn;
105kgs; 0.1cbm**



**Item No. 066 16-28; 02pc/ctn;
88kgs; 0.026cbm**



**Item No. 013 22-32; 02pc/ctn;
95kgs; 0.09cbm**

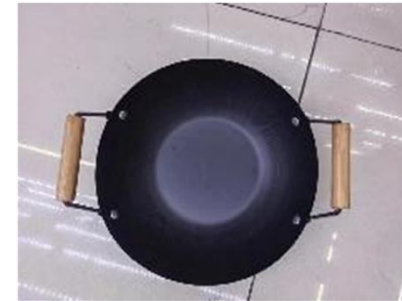


**Item No. 005 18-30; 04pc/ctn;
110kgs; 0.12cbm**

**IS-20
COOKWARE**



**Item No. Pan; 30pc/ctn;
50/52/54kgs;
0.037/0.06/0.09cbm**



**Item No. Pan; 24pc/ctn;
37/38/39kgs;
0.062/0.082/0.092cbm**



**Item No. Pan; 24pc/ctn;
50/52/54kgs;
0.03/0.04/0.07cbm**

IS-21 GAS STOVE



Item No. 2050C; 04pc/ctn;
120kgs; 1.05cbm



Item No. 3076C; 04pc/ctn;
150kgs; 1.05cbm



Item No. 1002CC; 08pc/ctn;
60kgs; 0.22cbm



Item No. 3081CC; 04pc/ctn;
90kgs; 0.45cbm

**IS-22
CUP & SAUCER**



**Item No. G GK; 08pc/ctn;
150kgs; 0.07cbm**



**Item No. G GK; 08pc/ctn;
150kgs; 0.07cbm**



**Cup Saucer;
08pc/ctn;
150kgs; 0.07cbm**



**Cup; 72pc/ctn;
80kgs; 0.05cbm**



**Cup; 72pc/ctn;
80kgs; 0.05cbm**

**IS-23
MELAMINEWARE**



**Item No. CK2814; 50pc/ctn;
10/15/20kgs;
0.023/0.04/0.057cbm**



**Item No. CKT0015; 50pc/ctn;
13/15/20kgs;
0.035/0.04/0.048cbm**



**Item No. CK208-1;
240pc/ctn;
21/24kgs;
0.046/0.044cbm**



**Item No. CK1009;
240pc/ctn;
26/29kgs;
0.037/0.042cbm**



**Item No. CK1065;
360/240pc/ctn;
24/26/29kgs;
0.033/0.052/0.045cbm**

**IS-24
ELECTRICAL APPLIANCES**

IRON



**Item No. JMK1002-Red;
20pc/ctn;
23kgs; 0.08cbm**



**Item No. JMK1002-Purple;
20pc/ctn;
23kgs; 0.08cbm**



**Item No. JMK1013-Purple;
10pc/ctn;
18kgs; 0.076cbm**

Hot Plate - Single



**Item No. JMK7013;
10pc/ctn;
20kgs; 0.041cbm**

Hot Plate - Double



**Item No. JMK7014;
5pc/ctn;
25kgs; 0.046cbm**

**IS-25
MOSQUITO SWATTER**



MOSQUITO KILLER LAMP
Item No. 308-8W; 16pc/ctn;
45gs; 0.1cbm



Item No. LTD-209; 60pc/ctn;
125gs; 0.108cbm



Item No. LTD-008; 60pc/ctn;
120gs; 0.108cbm



Item No. LTD-026; 60pc/ctn;
116gs; 0.1cbm

IS-26 LIGHTS



**LED BULB; 100/50pc/30pc/ctn;
30/35/39kgs;
0.103/0.097/0.090cbm**

**IS-27
FAN**



**Item No. FAN;
02pc/ctn;
200kgs; 0.055cbm**



**Item No. FAN;
04pc/ctn;
200kgs; 0.124cbm**



**Item No. FAN;
04pc/ctn;
135kgs; 0.085cbm**



**Item No. FAN;
04pc/ctn;
90kgs; 0.054cbm**



**Item No. FAN;
04pc/ctn;
110kgs; 0.072cbm**

**IS-28
PLUMBING FITTINGS**



**Item No. V2110;
300pc/ctn;
10kgs; 0.066cbm**



**Item No. V011;
300pc/ctn;
10kgs; 0.066cbm**



**Item No. T112;
300pc/ctn;
15kgs; 0.0734 cbm**



**Item No. T111;
300pc/ctn;
21kgs; 0.095 cbm**



**Item No. V223;
300pc/ctn;
11kgs; 0.066 cbm**



**Item No. T013;
300pc/ctn;
10 kgs; 0.08cbm**



**Item No. V218;
100pc/ctn;
12 kgs; 0.05cbm**



**Item No. V228;
100pc/ctn;
12 kgs; 0.066cbm**



**Item No. T101;
100pc/ctn;
13 kgs; 0.08cbm**



**Item No. V214;
100pc/ctn;
13 kgs; 0.08cbm**



**Item No. BS02;
100pc/ctn;
15 kgs; 0.08cbm**